

Steering Lock Connector



1

D

B

B

B

violet/white

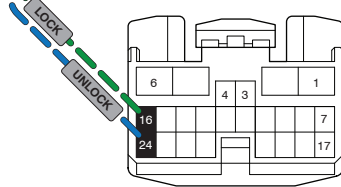
C

Main Body ECU

2

**E Door Lock Connections**

Driver's Door module



**OPTIONAL CONNECTIONS:**

If connected, OEM and aftermarket remotes will always be synchronized.

If not connected, user must lock vehicle doors using OEM remote or door request switch after operating vehicle, every time.

For more information, read "Warning: Door Lock Synchronization", in the BLADE install document.

**Códigos de error de programación de LED**

El LED del módulo parpadea en ROJO durante la programación

- 1x - No se detecta CAN, verifique las conexiones
- 2x - VIN no leído, verifique las conexiones
- 3x - VIN desconocido, plataforma de fuerza
- 4x - Sin IMMO
- 5x - Arrancador remoto OEM detectado, quitar
- 6x - Plataforma clave detectada, verifique las conexiones
- 7x - No se detecta RX, verifique las conexiones
- 8x - No se detecta TX, verifique las conexiones

**RECUPERACIÓN NO COMPATIBLE: EL VEHÍCULO SE APAGARÁ AL ABRIR LA PUERTA DEL CONDUCTOR.**

## CARTRIDGE INSTALLATION



1 Slide cartridge into unit. Notice button under LED.

2

Ready for Module Programming Procedure.

## MODULE PROGRAMMING PROCEDURE

### NOTE

Between each step, LED will turn solid RED, this is the default standby mode.



1 Push start button twice [2x] to ON position.



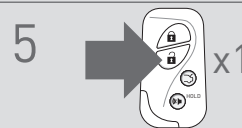
2 LED will turn solid RED.



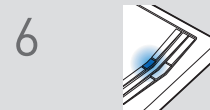
3 Within 5 seconds, LED will flash BLUE rapidly.



4 Push start button once [1x] to OFF position.



5 Press unlock button once [1x] on OEM keyfob.



6 Wait, LED will turn solid BLUE for 2 seconds.

7

Module Programming Procedure completed.

## TAKEOVER NOT AVAILABLE