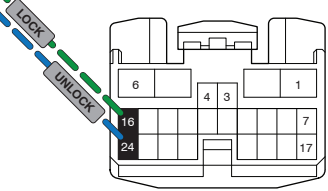


E Door Lock Connections

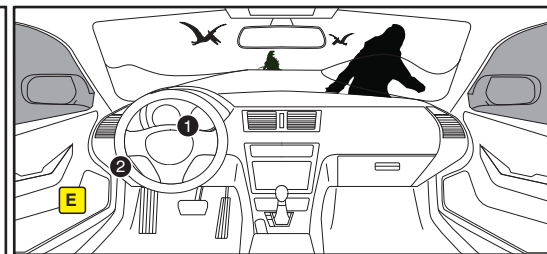
Driver's Door module



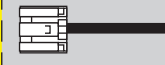
OPTIONAL CONNECTIONS:
If connected, OEM and aftermarket remotes will always be synchronized.

If not connected, user must lock vehicle doors using OEM remote or door request switch after operating vehicle, every time.

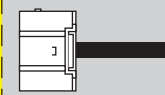
For more information, read "Warning: Door Lock Synchronization", in the BLADE install document.



Steering Lock Connector



Main Body ECU



violet/white

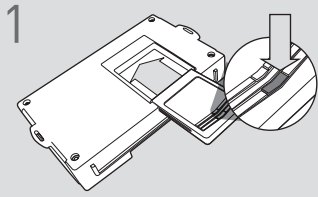


LED Programming Error Codes

- Module LED flashing RED during programming
- 1x - No CAN detected, check connections
- 2x - VIN not read, check connections
- 3x - VIN unknown, force platform
- 4x - No IMMO
- 5x - OEM remote starter detected, remove
- 6x - Key platform detected, check connections
- 7x - No RX detected, check connections
- 8x - No TX detected, check connections

TAKEOVER NOT SUPPORTED: THE VEHICLE WILL SHUT DOWN UPON OPENING DRIVER'S DOOR

CARTRIDGE INSTALLATION



1 Slide cartridge into unit. Notice button under LED.

2

Ready for Module Programming Procedure.

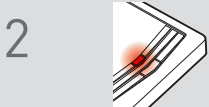
MODULE PROGRAMMING PROCEDURE

NOTE

Between each step, LED will turn solid RED, this is the default standby mode.



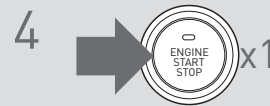
1 Push start button twice [2x] to ON position.



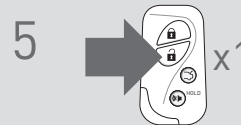
2 LED will turn solid RED.



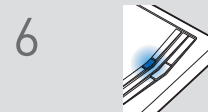
3 Within 5 seconds, LED will flash BLUE rapidly.



4 Push start button once [1x] to OFF position.



5 Press unlock button once [1x] on OEM keyfob.



6 Wait, LED will turn solid BLUE for 2 seconds.

7

Module Programming Procedure completed.

TAKEOVER NOT AVAILABLE