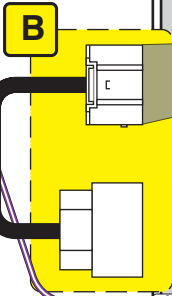
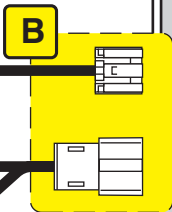


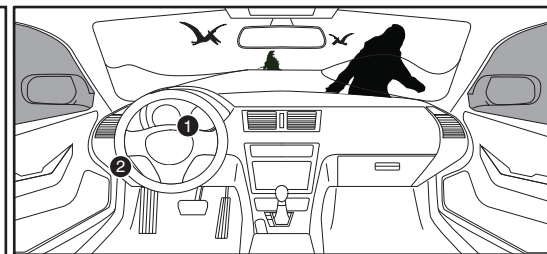
TLP4

D



violet/white

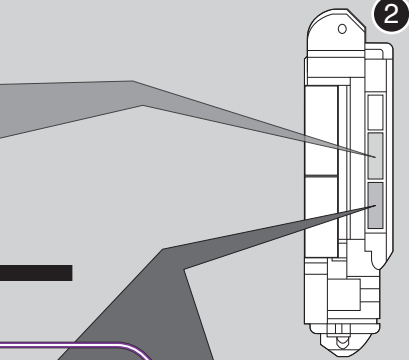
C



Steering Lock Connector 1



Main Body ECU 2

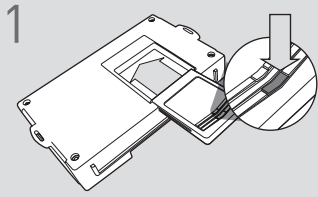


LED Programming Error Codes

- Module LED flashing RED during programming
- 1x - No CAN detected, check connections
 - 2x - VIN not read, check connections
 - 3x - VIN unknown, force platform
 - 4x - No IMMO
 - 5x - OEM remote starter detected, remove
 - 6x - Key platform detected, check connections
 - 7x - No RX detected, check connections
 - 8x - No TX detected, check connections

TAKEOVER NOT SUPPORTED: THE VEHICLE WILL SHUT DOWN UPON OPENING DRIVER'S DOOR

CARTRIDGE INSTALLATION



1 Slide cartridge into unit. Notice button under LED.

2

Ready for Module Programming Procedure.

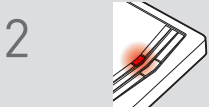
MODULE PROGRAMMING PROCEDURE

NOTE

1 Between each step, LED will turn solid RED, this is the default standby mode.



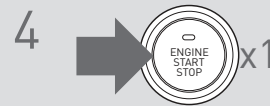
1 Push start button twice [2x] to ON position.



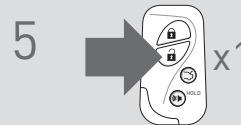
2 LED will turn solid RED.



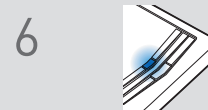
3 Within 5 seconds, LED will flash BLUE rapidly.



4 Push start button once [1x] to OFF position.



5 Press unlock button once [1x] on OEM keyfob.



6 Wait, LED will turn solid BLUE for 2 seconds.

7

Module Programming Procedure completed.

TAKEOVER NOT AVAILABLE