

FTI-TLP4: Vehicle Coverage and Preparation Notes

Make	Model	Year	Install	ECU	Lights	Locks	Trunk/Hatch	I/O Changes
DL-TL6 Lexus	ES 350 PTS AT	2013-15	Type 1	1/DKP	Park / Auto Yes	Yes	Red (5)	Green White/Blue N/A

This installation requires **BLADE-AL(DL)-TL6** firmware, flash module and update controller before beginning the installation.

Install Type 1: Main Body ECU, driver side kick panel area, optional trunk/hatch connection.

CAN: Vehicle CAN data is gathered through the 30-pin connection at the **Main Body ECU**, no other connections are required.

Lights: Parking light and auto-light control are handled using the pre-terminated **green/white** wire bundled with the **BLADE** connector. Remove the (-) pk light wire from the controller's **gray** I/O connector and replace it with the one specified, for status and diagnostic reporting.

Locks: This installation type requires additional connections to the vehicle door locks to ensure proper operation. **The 6-pin lock connector is required, connect to the control module lock output port.**

Trunk/Hatch: Additional wiring is required to control feature, wire color and location listed above, connect as illustrated.

Idle Mode is not a supported feature of the FTI-TLP4 Harness: The Idle Mode feature which allows the user to exit a running has been excluded from the FTI-TLP4 harness wiring. **If this feature is desired, please refer to the full BLADE installation diagram for the applicable wiring and make the required connection to the vehicle PTS button.**

TAKEOVER NOT SUPPORTED: THE VEHICLE WILL SHUT DOWN UPON OPENING DRIVER'S DOOR

FTI-TLP4: Installation and Configuration Notes

- A CONNECTIONS REQUIRED
- B CONNECTIONS REQUIRED
- C OPTIONAL CONNECTION
- D REQUIRED CONFIGURATION



FEATURE COVERAGE																						
IMMOBILIZER DATA	PTS CONTROL	ARM OEM ALARM	DISARM OEM ALARM	A/M CONTROL FROM OEM REMOTES	A/M RS CONTROL	FRMO OEM REMOTE	PRIORITY UNLOCK	DOOR LOCK	DOOR UNLOCK	TRUNK/HATCH RELEASE	TACH OUTPUT	BRAKE STATUS	E-BRAKE STATUS	DOOR STATUS	TRUNK STATUS	HOOD STATUS	PARKING LIGHTS	AUTOLIGHT CONTROL				

- FT-DAS Required for manual transmission.
- BOTH Red & Red/White MUST be connected with high current application.

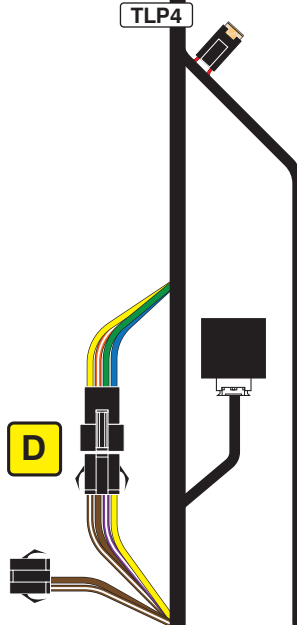
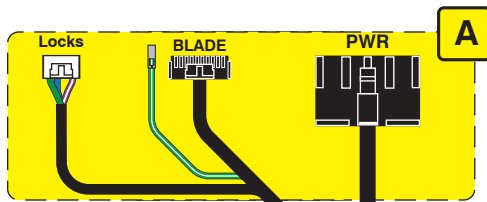
Jumper Setting

Parking Light	(+)-Door Trigger In	(-)-Door Trigger In
Accessory	Trunk	Starter
Ignition (Default)	Starter	Ignition
Parking Light (Default)	Accessory (Default)	

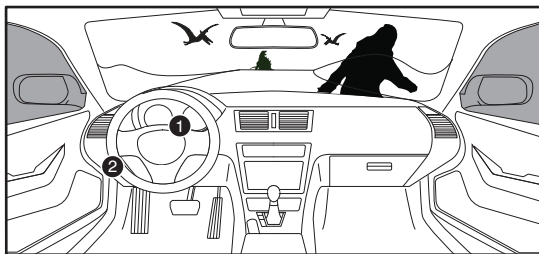
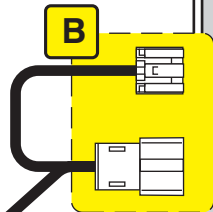
CM7000/7200 Cut loop for A/T

CM-900S/900AS

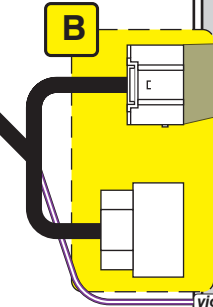
CM900AS/900S Jumper



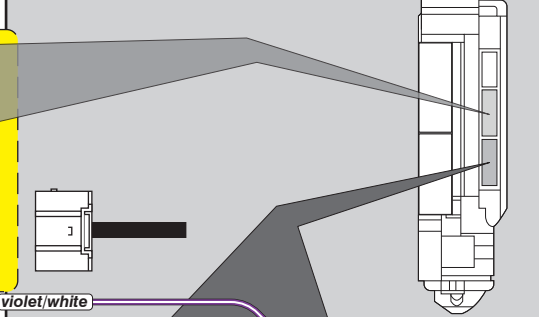
TLP4



Steering Lock Connector 1



Main Body ECU 2



C

LED Programming Error Codes

- Module LED flashing RED during programming
- 1x - No CAN detected, check connections
 - 2x - VIN not read, check connections
 - 3x - VIN unknown, force platform
 - 4x - No IMMO
 - 5x - OEM remote starter detected, remove
 - 6x - Key platform detected, check connections
 - 7x - No RX detected, check connections
 - 8x - No TX detected, check connections

TAKEOVER NOT SUPPORTED: THE VEHICLE WILL SHUT DOWN UPON OPENING DRIVER'S DOOR

CARTRIDGE INSTALLATION



1 Slide cartridge into unit. Notice button under LED.

2

Ready for Module Programming Procedure.

MODULE PROGRAMMING PROCEDURE

NOTE

Between each step, LED will turn solid RED, this is the default standby mode.



1 Push start button twice [2x] to ON position.



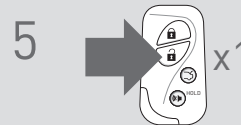
2 LED will turn solid RED.



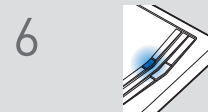
3 Within 5 seconds, LED will flash BLUE rapidly.



4 Push start button once [1x] to OFF position.



5 Press unlock button once [1x] on OEM keyfob.



6 Wait, LED will turn solid BLUE for 2 seconds.

7

Module Programming Procedure completed.

TAKEOVER NOT AVAILABLE