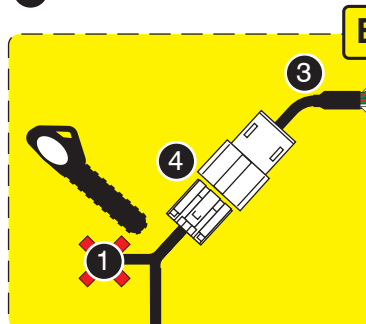
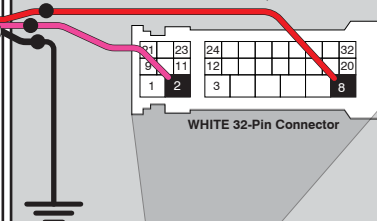
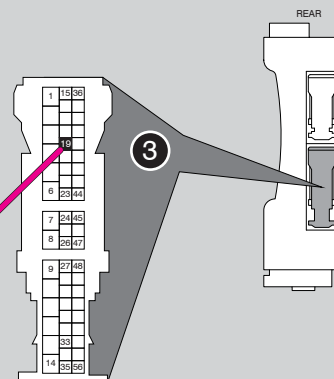
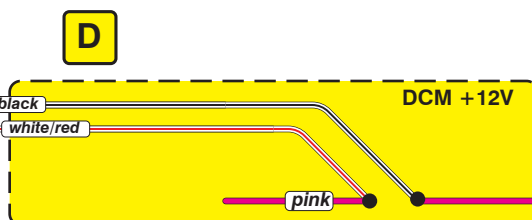
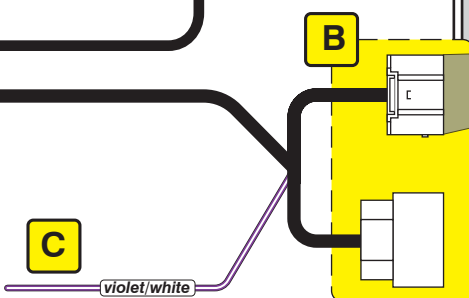
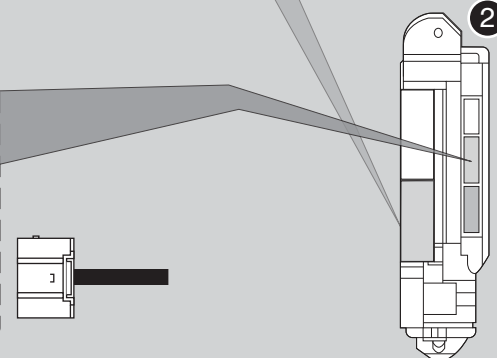


- 1 Retire la carcasa hembra
- 2 Conectar +12V, IGN, GND
- 3 Aísle los cables no utilizados
- 4 Conectar al arnés


**32-Pin Connector**  
 Main Body Ecu **2**

VEHÍCULO SIN BLOQUEO DE DIRECCIÓN

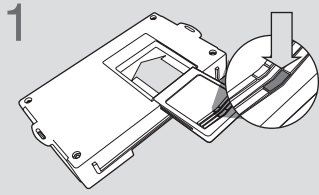

**Main Body ECU** **2**

**Códigos de error de programación de LED**

El LED del módulo parpadea en ROJO durante la programación

- 1x - Error de CAN, comprobar conexiones
- 2x - Sin IGN, verifique las conexiones
- 3x - Error de IMMO / CAN, verifique las conexiones
- 4x - Sin VIN, verifique las conexiones
- 5x - VIN desconocido, verifique las conexiones
- 6x - Arrancador OEM detectado, ciclo IGN, si el problema persiste, eliminar y reprogramar

**RECUPERACIÓN NO COMPATIBLE: EL VEHÍCULO SE APAGARÁ AL ABRIR LA PUERTA DEL CONDUCTOR.**

## CARTRIDGE INSTALLATION



1 Slide cartridge into unit. Notice button under LED.

2

Ready for Module Programming Procedure.

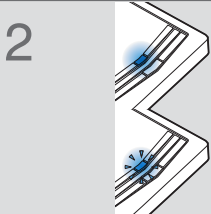
## MODULE PROGRAMMING PROCEDURE

### NOTE

I IMPORTANT: The hood must be closed.



1 Push start button twice [2x] to ON position.

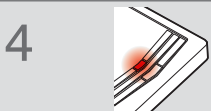


2 Wait, if LED turns solid BLUE for 2 seconds, proceed to step 7.

If LED flashes BLUE rapidly, proceed to step 3.



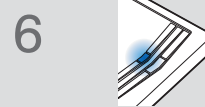
3 Push start button once [1x] to OFF position.



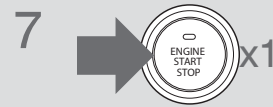
4 Wait, LED will turn solid RED. (This may take up to 5 minutes.)



5 Push start button twice [2x] to ON position.



6 Wait, LED will turn solid BLUE for 2 seconds



7 Push start button once [1x] to OFF position.

8

Module Programming Procedure completed.