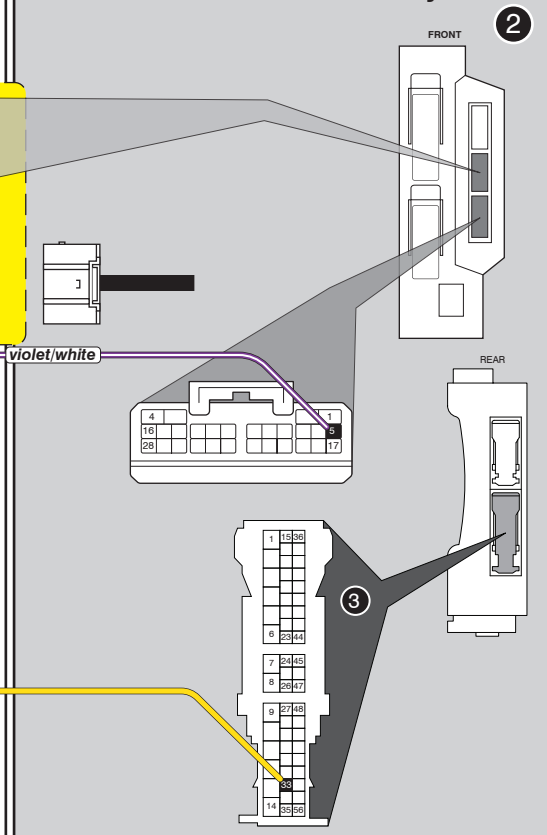


**Steering Lock Connector**



**Main Body ECU**



**LED Programming Error Codes**

- Module LED flashing RED during programming
- 1x - CAN error, confirm harness configuration
  - 2x - No IGN, confirm IGN power and harness configuration
  - 3x - IMMO/CAN error, confirm harness configuration
  - 4x - No VIN, module may default to base platform #2
  - 5x - Unknown VIN, module may default to base platform #2
  - 6x - OEM starter detected, cycle IGN, if issue persists, remove and reprogram

**TAKEOVER NOT SUPPORTED: THE VEHICLE WILL SHUT DOWN UPON OPENING DRIVER'S DOOR**

## CARTRIDGE INSTALLATION



1 Slide cartridge into unit. Notice button under LED.

2

Ready for Module Programming Procedure.

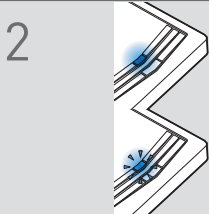
## MODULE PROGRAMMING PROCEDURE

### NOTE

1 IMPORTANT: The hood must be closed.



1 Push start button twice [2x] to ON position.

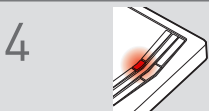


2 Wait, if LED turns solid BLUE for 2 seconds, proceed to step 7.

If LED flashes BLUE rapidly, proceed to step 3.



3 Push start button once [1x] to OFF position.



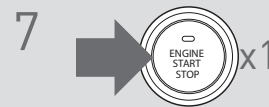
4 Wait, LED will turn solid RED. (This may take up to 5 minutes.)



5 Push start button twice [2x] to ON position.



6 Wait, LED will turn solid BLUE for 2 seconds.



7 Push start button once [1x] to OFF position.

8

Module Programming Procedure completed.