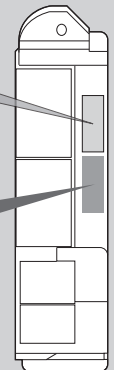


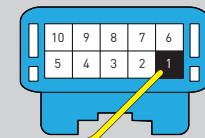
Steering Lock Connector



Main Body ECU



Junction Connector (DCM)



BLUE JUNCTION BLOCK
ABOVE DRIVER KICK PANEL

Códigos de error de programación de LED

El LED del módulo parpadea en ROJO durante la programación

- 1x - Error de CAN, comprobar conexiones
- 2x - Sin IGN, verifique las conexiones
- 3x - Error de IMMO / CAN, verifique las conexiones
- 4x - Sin VIN, verifique las conexiones
- 5x - VIN desconocido, verifique las conexiones
- 6x - Arrancador OEM detectado, ciclo IGN, si el problema persiste, eliminar y reprogramar

RECUPERACIÓN NO COMPATIBLE: EL VEHÍCULO SE APAGARÁ AL ABRIR LA PUERTA DEL CONDUCTOR.

CARTRIDGE INSTALLATION



1 Slide cartridge into unit. Notice button under LED.

2

Ready for Module Programming Procedure.

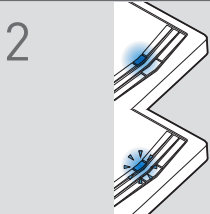
MODULE PROGRAMMING PROCEDURE

NOTE

I IMPORTANT: The hood must be closed.



1 Push start button twice [2x] to ON position.

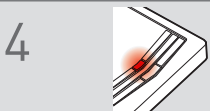


2 Wait, if LED turns solid BLUE for 2 seconds, proceed to step 7.

If LED flashes BLUE rapidly, proceed to step 3.



3 Push start button once [1x] to OFF position.



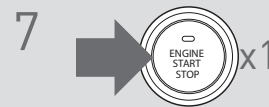
4 Wait, LED will turn solid RED. (This may take up to 5 minutes.)



5 Push start button twice [2x] to ON position.



6 Wait, LED will turn solid BLUE for 2 seconds.



7 Push start button once [1x] to OFF position.

8

Module Programming Procedure completed.