

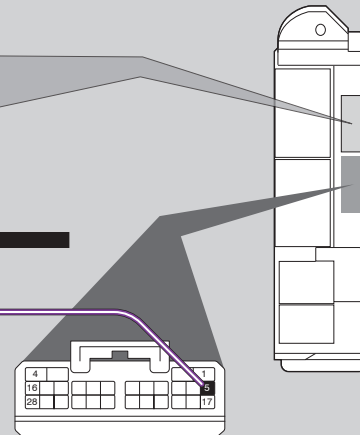
Steering Lock Connector



1

Main Body ECU

2



Códigos de error de programación de LED

El LED del módulo parpadea en ROJO durante la programación

- 1x - Error de CAN, comprobar conexiones
- 2x - Sin IGN, verifique las conexiones
- 3x - Error de IMMO / CAN, verifique las conexiones
- 4x - Sin VIN, verifique las conexiones
- 5x - VIN desconocido, verifique las conexiones
- 6x - Arrancador OEM detectado, ciclo IGN, si el problema persiste,eliminar y reprogramar

RECUPERACIÓN NO COMPATIBLE: EL VEHÍCULO SE APAGARÁ AL ABRIR LA PUERTA DEL CONDUCTOR.

CARTRIDGE INSTALLATION



1 Slide cartridge into unit. Notice button under LED.

2

Ready for Module Programming Procedure.

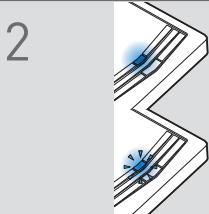
MODULE PROGRAMMING PROCEDURE

NOTE

1 IMPORTANT: The hood must be closed.



1 Push start button twice [2x] to ON position.

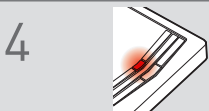


2 Wait, if LED turns solid BLUE for 2 seconds, proceed to step 7.

If LED flashes BLUE rapidly, proceed to step 3.



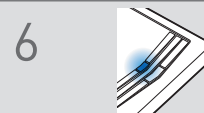
3 Push start button once [1x] to OFF position.



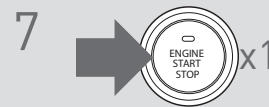
4 Wait, LED will turn solid RED. (This may take up to 5 minutes.)



5 Push start button twice [2x] to ON position.



6 Wait, LED will turn solid BLUE for 2 seconds.



7 Push start button once [1x] to OFF position.

8

Module Programming Procedure completed.