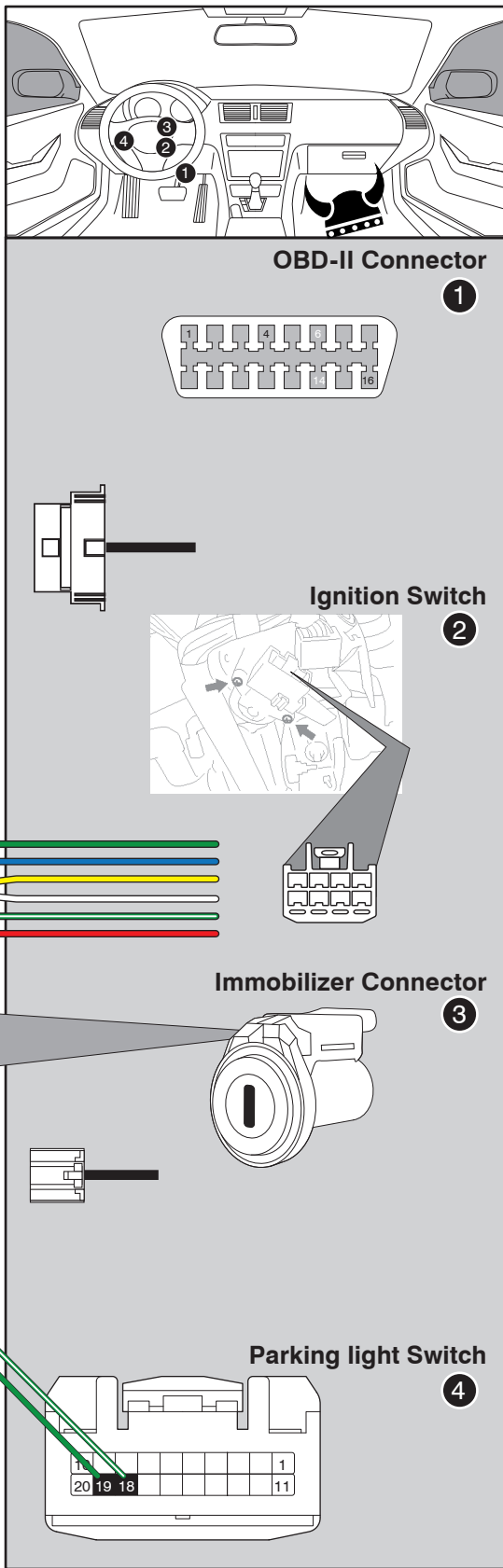


READ THIS

CN1 - Green/White - START
- CM7 - Jumper #3 to STARTER
- CMX - HCP#1 to 2ND START [2]
- CM9 - Feature option 1-06-2



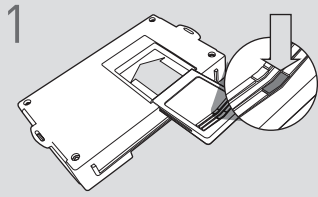
LED Programming Error Codes

Module LED flashing RED during programming

- 1x - CAN error, check connections
- 2x - VIN detection failure, check CAN connections
- 3x - VIN unknown
- 4x - IMMO error, check connections
- 5x - OEM remote starter detected, remove from vehicle

Solid red LED - TXCT/CODE error, check wiring and confirm equipment level.

CARTRIDGE INSTALLATION



1 Slide cartridge into unit. Notice button under LED.

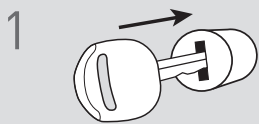
2

Ready for Module Programming Procedure.

TYPE 1 - MODULE PROGRAMMING PROCEDURE

NOTE

I Between each step, LED will turn solid RED, this is the default standby mode.



1 Insert key into ignition.



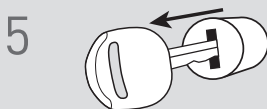
2 Turn key to ON position.



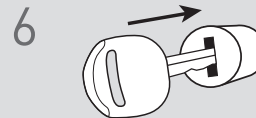
3 LED will flash BLUE once [1x].



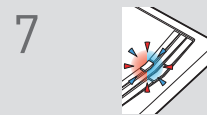
4 Turn key to OFF position.



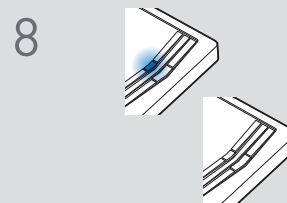
5 Remove key.



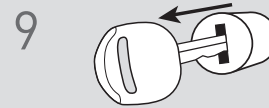
6 Insert key into ignition.



7 LED will flash BLUE and RED.
[If vehicle is not equipped with immobilizer, press module programming button.]



8 Wait, LED will turn solid BLUE then will turn OFF.



9 Remove key.

10

Module Programming Procedure completed.