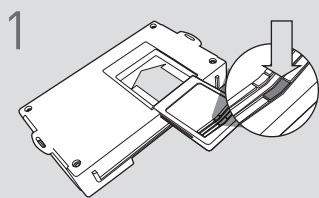


Códigos de error de programación de LED

El LED del módulo parpadea en ROJO durante la programación

- 1x - Sin datos CAN, confirmar conectores, verificar voltaje
- 2x - Esperando IGN ON
- 3x - Configuración incorrecta del arnés, verifique las conexiones
- 4x - Llave de detección distinta a la utilizada para la programación
- 5x - La secuencia del inmovilizador no se inicia, despierta el vehículo
- 6x - La secuencia del inmovilizador no se inicia, reinicia el módulo, despierta vehículo y vuelva a intentar la programación, si el problema persiste, reinicie
- 7x - Los datos de Klon no coinciden, procedimiento de reinicio y reinicio

CARTRIDGE INSTALLATION



1 Slide cartridge into unit. Notice button under LED.

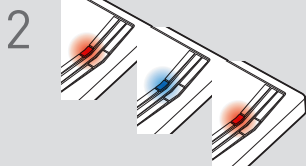
2

Ready for Module Programming Procedure.

MODULE PROGRAMMING PROCEDURE

1 OFF ACC **ON** START

Set ignition to ON position.



2 Wait, LED will turn solid RED, then solid BLUE for 1 second, then solid RED.

3 OFF ACC ON START

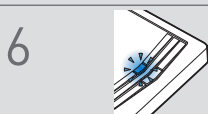
Set ignition to OFF position.



4 Wait, LED will turn OFF.

5 OFF ACC **ON** START

Set ignition to ON position.



6 If LED flashes BLUE rapidly, proceed with step 7. If LED turns solid BLUE for 2 seconds, proceed with step 13.

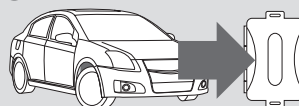
7 OFF ACC ON START

Set ignition to OFF position.



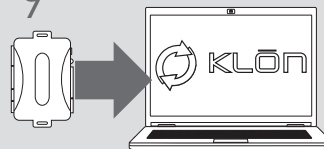
8

WARNING:
Disconnect power last.
Disconnect module from vehicle.



9

Connect module to computer and proceed with extended programming.



10

WARNING:
Connect power first.
Connect module to vehicle.



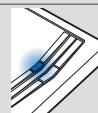
11 OFF ACC **ON** START

Set ignition to ON position.



12

Wait, LED will turn solid BLUE for 2 seconds.



13 OFF ACC ON START

Set ignition to OFF position.



14

Module Programming Procedure completed.

WARNING: READ BEFORE REMOTE STARTING THE VEHICLE

IMPORTANT

- I All vehicle doors must be closed and locked prior to remote start sequence. Failure to comply will result in remote starter malfunction.

TAKE OVER PROCEDURE - PUSH TO START - TO THE VEHICLE OWNER

NOTE

- I All vehicle doors must be closed and locked prior to remote start sequence.



TIME RESTRICTION COMING UP !

1



Unlock vehicle door using OEM or after-market remote, or door request switch.

2



TIME RESTRICTION

Within 45 SECONDS from previous step:

Open vehicle door.
Enter vehicle.
Close vehicle door.

Press and release BRAKE pedal.

3

Take over procedure completed.



Failure to follow procedure will result in vehicle engine shutdown.

