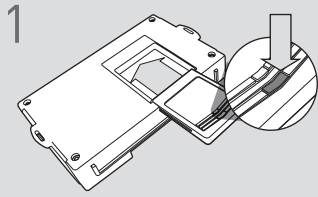


**LED Programming Error Codes**

Module LED flashing RED during programming

- 1x - CAN error, check connectors and CAN voltage
  - 2x - No IGN, check connectors and IGN voltage
  - 3x - Timeout, redo programming, confirm CAN voltage
  - 4x - BCM communication error, connections/CAN voltage
  - 5x - Firmware does not match wiring, confirm current version
  - 6x - VIN error, flash again and confirm vehicle entry
- Rapid RED - Cycle IGN and START, reset module and repeat entire programming sequence over.

## CARTRIDGE INSTALLATION



1 Slide cartridge into unit. Notice button under LED.

2

Ready for Module Programming Procedure.

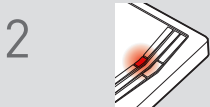
## MODULE PROGRAMMING PROCEDURE

### NOTE

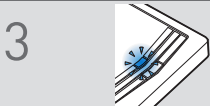
1 **WARNING:** Hood, doors, trunk/hatch must be closed prior to remote start sequence.



1 Push start button twice [2x] to ON position.



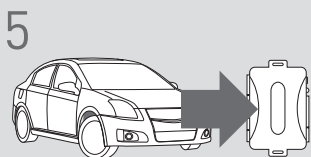
2 Wait, LED will turn solid RED to confirm that the ignition is ON.



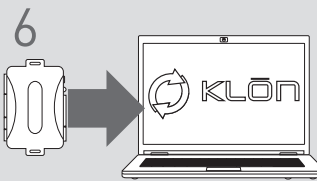
3 Wait 10 seconds, LED will flash BLUE rapidly.



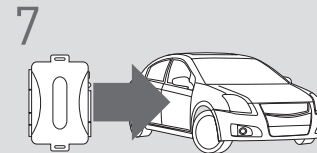
4 Push start button once [1x] to OFF position.



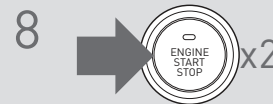
5 **WARNING:** Disconnect power last. Disconnect RS from vehicle.



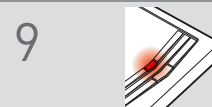
6 Connect RS to computer and proceed with extended programming.



7 **WARNING:** Do not press RS programming button. Connect power first. Connect RS to vehicle.



8 Push start button twice [2x] to ON position.



9 Wait, LED will turn solid RED to confirm that the ignition is ON.



10 Wait, LED will turn solid BLUE for 2 seconds.

**!** If vehicle is equipped with power liftgate: open and close the power liftgate with OEM keyfob.

11

Module Programming Procedure completed.

## WARNING: READ BEFORE REMOTE STARTING THE VEHICLE

### IMPORTANT

- I All vehicle doors must be closed and locked prior to remote start sequence. Failure to comply will result in remote starter malfunction.

## TAKE OVER PROCEDURE - PTS - TO THE VEHICLE OWNER

### NOTE

- I All vehicle doors must be closed and locked prior to remote start sequence.



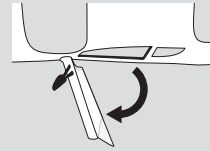
**TIME RESTRICTION COMING UP !**

1



Unlock vehicle door using OEM or after-market remote, or door request switch.

2



### TIME RESTRICTION

Within 45 SECONDS from previous step:

Open vehicle door.  
Enter vehicle.  
Close vehicle door.

Press and release BRAKE pedal.

3

Take over procedure completed.



Failure to follow procedure will result in vehicle engine shutdown.