

12V

¡Oye! Recuerda esa cosa Dije sobre romper el auto si trabajas en eso sin desconectando la batería primero? Sí, es verdad.

Start/Stop Unit

Headlight Switch Connector Type 1

Headlight Switch

Headlight Switch Connector Type 2

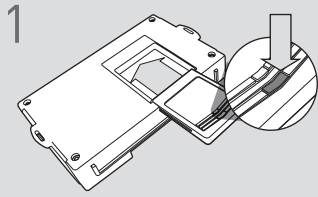
Códigos de error de programación de LED

El LED del módulo parpadea en ROJO durante la programación

- 1x - Error de CAN, verifique conectores y voltaje de CAN
- 2x - Sin IGN, verifique los conectores y el voltaje de IGN
- 3x - Tiempo de espera, rehacer la programación, voltaje CAN
- 4x - Error de comunicación BCM, conexiones / voltaje CAN
- 5x - El firmware no coincide con el cableado, confirme versión
- 6x - Error de VIN, parpadea de nuevo y confirma vehículo

ROJO rápido: ciclo de encendido y arranque, reinicio del módulo y programa de nuevo.

CARTRIDGE INSTALLATION



1 Slide cartridge into unit. Notice button under LED.

2

Ready for Module Programming Procedure.

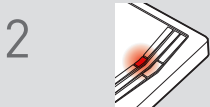
MODULE PROGRAMMING PROCEDURE

NOTE

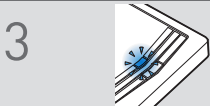
1 **WARNING:** Hood, doors, trunk/hatch must be closed prior to remote start sequence.



1 Push start button twice [2x] to ON position.



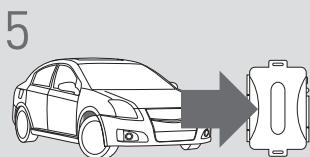
2 Wait, LED will turn solid RED to confirm that the ignition is ON.



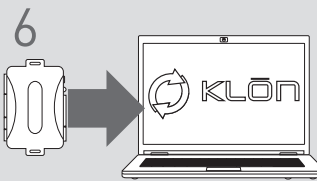
3 Wait 10 seconds, LED will flash BLUE rapidly.



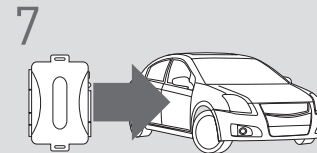
4 Push start button once [1x] to OFF position.



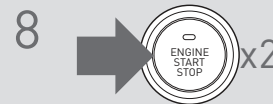
5 **WARNING:** Disconnect power last. Disconnect RS from vehicle.



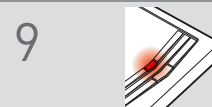
6 Connect RS to computer and proceed with extended programming.



7 **WARNING:** Do not press RS programming button. Connect power first. Connect RS to vehicle.



8 Push start button twice [2x] to ON position.



9 Wait, LED will turn solid RED to confirm that the ignition is ON.



10 Wait, LED will turn solid BLUE for 2 seconds.

! If vehicle is equipped with power liftgate: open and close the power liftgate with OEM keyfob.

11

Module Programming Procedure completed.

WARNING: READ BEFORE REMOTE STARTING THE VEHICLE

IMPORTANT

- I All vehicle doors must be closed and locked prior to remote start sequence. Failure to comply will result in remote starter malfunction.

TAKE OVER PROCEDURE - PTS - TO THE VEHICLE OWNER

NOTE

- I All vehicle doors must be closed and locked prior to remote start sequence.



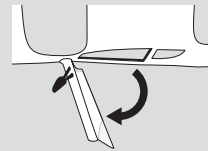
TIME RESTRICTION COMING UP !

1



Unlock vehicle door using OEM or after-market remote, or door request switch.

2



TIME RESTRICTION

Within 45 SECONDS from previous step:

Open vehicle door.
Enter vehicle.
Close vehicle door.

Press and release BRAKE pedal.

3

Take over procedure completed.



Failure to follow procedure will result in vehicle engine shutdown.